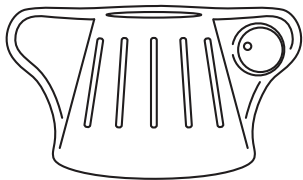


REMEDIC™

AFFORDABLE SOLUTIONS FOR HEALTHY
DAILY LIVING

Multi-opener With magnifying glass and LED light



- The Remedic multi opener lock opener makes it easy to open common (medical) screw caps and other screw lids with a diameter from approx. 2.8 to 5.5 cm.

- Ergonomic grip strengthening and non-slip material ensure a secure grip.

- An integrated magnifying glass and an LED light make it easier to read the fine print

Please read this guide before using .

- **This product is not a toy. Keep away from children!**

- The LED comes with a button cell LR621.


- Batteries are very dangerous if they are swallowed. If Batteries are swallowed immediately get medical help!

- Don' t immerse the multi opener in water.

- Clean the multi opener lock opener with a damp Cloth. Prevent that water penetrates into the battery compartment.

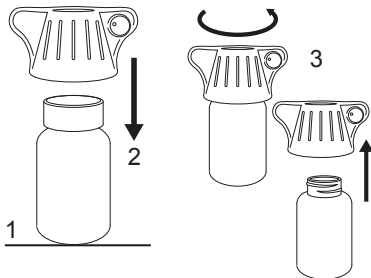
- Don' t use alcohol, acetone, or gas oline, aggressive cleaning agents for cleaning

- The LED cannot be replaced but is very durable.

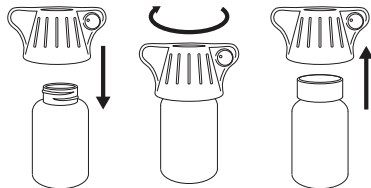
-  Please dispose of the battery environmentally friendly as per your local legislation. Do not put batteries in the Household waste.

Please use return and collection systems in your Community or contact the dealer where the product was bought.

Open screw cap

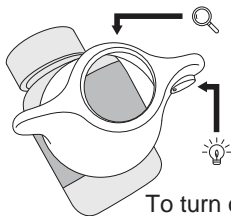


Close the screw cap



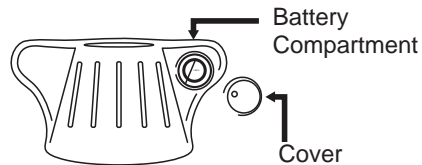
4. Close the container in reverse order.

Magnifier and LED Light



To turn on the LED, press and hold the red button

Change Batteries



- The battery compartment is under the red button (LED on / off switch) and is opened by removing the the cover.
- Remove the old battery.
- Insert a new battery Type LR621, with the + pole on the top into the compartment
- Close the battery compartment aga in with the red cover.

**For additional help/info
email:shop@remedic.co**