



# REMEDIC

## Soap Dispenser For Soap Bars



Suitable for most commercially available soap bars (not included)



reduce plastic

- With this environmentally friendly soap dispenser you can reduce the use liquid soap in plastic bottles and minimize your packaging waste.



hygienic

- The soap bar stays hygienic, dry and clean, a side opening provides ventilation and also allows a look at the soap size.



easy use

- The integrated grater rasps small flakes from a bar of soap which can easily dissolve for efficient washing hands. The soap dispenser can be operated with one hand.

### Assembly

The soap dispenser can be mounted with suction cups, double-sided 3M adhesive tape, screws or nano tape (included). For mounting on tiles, glass or mirrors, we recommend the suction cups, the 3M adhesive tape or the nano tape.

- Make sure that the surface on which to attach soap dispenser and the back of the bracket, are clean and dry.

- For Nano tape or 3M tape fix them on the backside of the bracket first then peel off the protective film.

- The suction cups need to be pressed through the openings in the backside of the bracket.

- Then press the holder firmly onto the wall, mirror or glass.



bracket suction cup 3M or Nano Tape press firmly

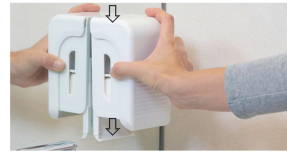
The screws are suitable for fixed wall mounting.

- Mark the holes before drilling.

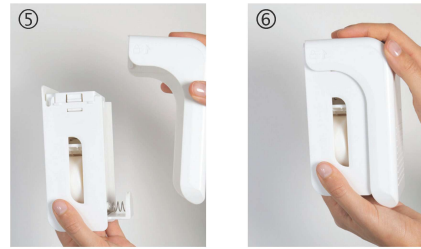
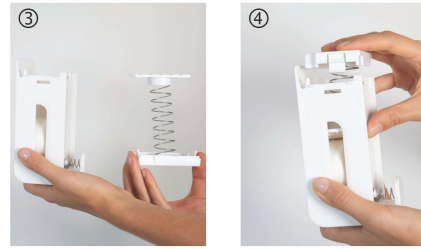
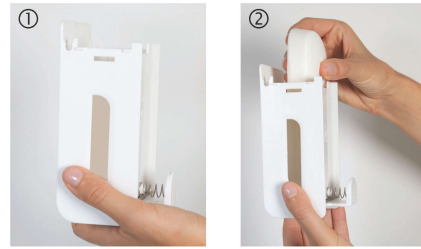
**Risk of death!** Pay attention to avoid power lines when drilling – and avoid other cables and pipes that are in the wall.

- Insert the wall plugs into the drill holes and fasten the bracket with the screws.

- Slide the soap container into place from above over the bracket until it audibly clicks.



### Insert Soap Bar



### How to Operate



- Put your hand under the soap dispenser and press on the lever.

- The soap flakes fall into your hand.

### Cleaning and care

- For cleaning do not use alcohol, acetone, petrol or aggressive cleaning agents.

- Wash the soap dispenser with warm water and let it dry well before you insert a new bar of soap.

### Disposal

- Please use the return and collection systems in your community or contact the dealer where the product was bought.



For more information please visit [www.remedic.co](http://www.remedic.co)

MADE IN CHINA